



The grading problem for the 6.4-acre site entailed locating 84 townhouses in two and three unit clusters, layout of roads and parking spaces and the creation of two retention basins. Certain restrictions on the placement and orientation of each unit were complied with, including making sure that each dwelling had individual private space facing away from interior roads and that no more than three feet of fill material be required for the finished floor elevation for each unit.

JASON M. BRABBS, MLA

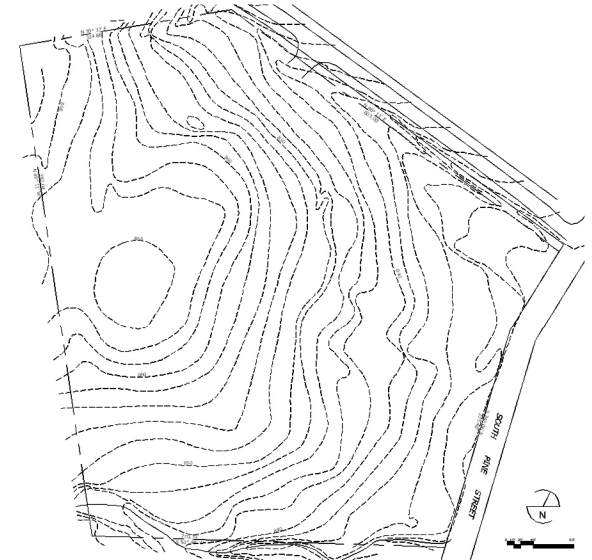
6 1 4 . 2 1 8 . 1 4 3 8
3 2 9 W I L B E R 2
C O L U M B U S O H I O 4 3 2 1 5
b r a b b s . 1 @ o s u . e d u

LANDSCAPE ARCHITECTURE CONSTRUCTION: EARTHWORK AS DESIGN

Professor J. Brooks Breeden

Spring 2004

Earthwork as Design focused on the study of design implementation, primarily grading techniques, drainage and road alignment. The site was given along with survey data including a written legal description of the sites boundaries and the graphic representation of the existing contours. Approximately 5 weeks, which included many review sessions, was allotted to complete the grading exercise for this project.



Pre Development Topography