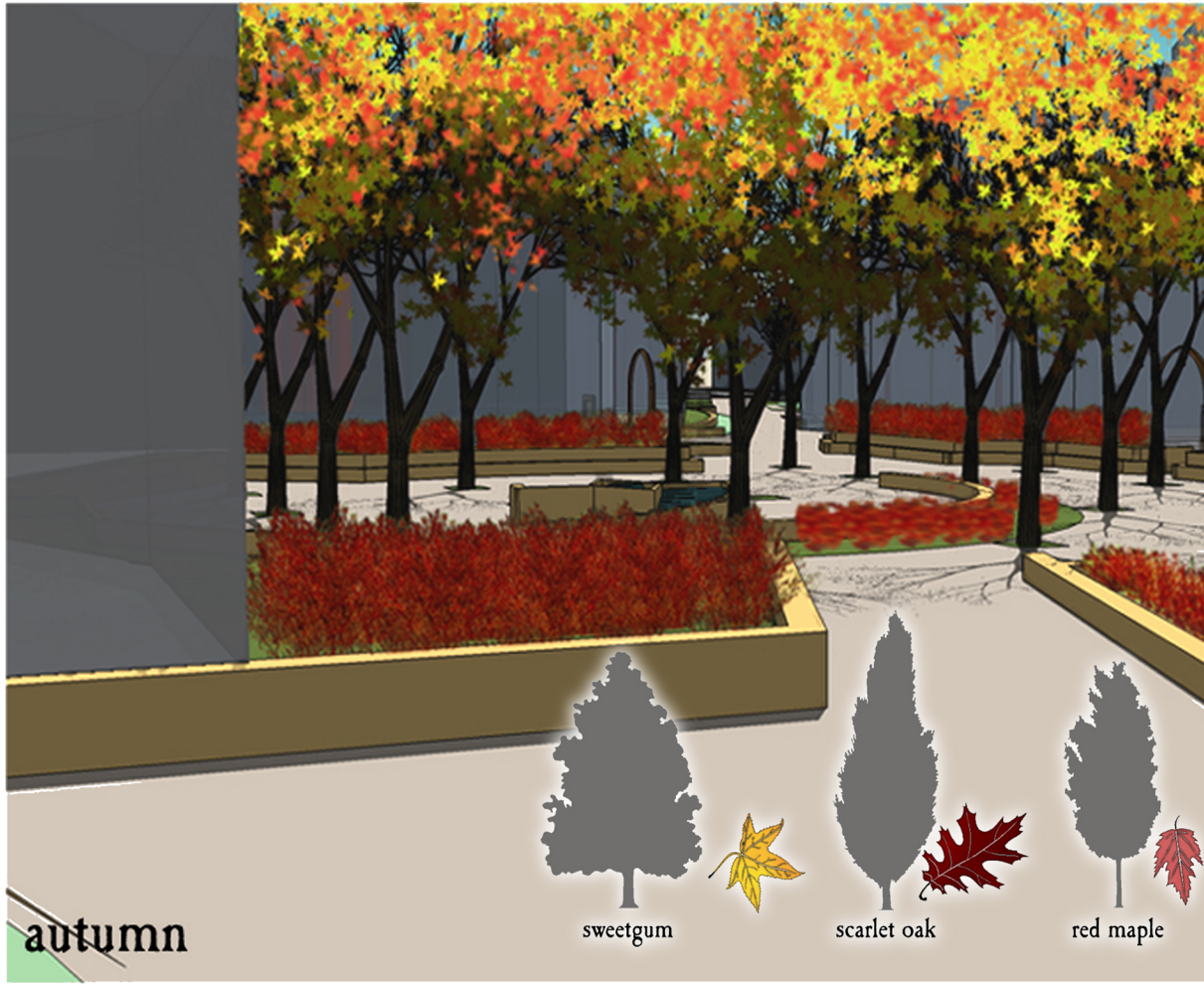


PLANTING DESIGN STUDIO

Professor Debra Georg

Winter 2004

This series of visual studies for the courtyard depict the qualities of color and light one might expect to see throughout the seasons when the design reaches maturity. Sweetgum (*Liquidambar styraciflua*), Scarlet Oak (*Quercus coccinea*) and Red Maple (*Acer Rubrum*) are all proven species in the urban environment. Their performance in less than ideal conditions and year round appeal make them ideal candidates for this site bringing shade in the summer, hues of gold, orange, pink, crimson and burgundy in autumn and compelling architectural form in winter. .



autumn



sweetgum



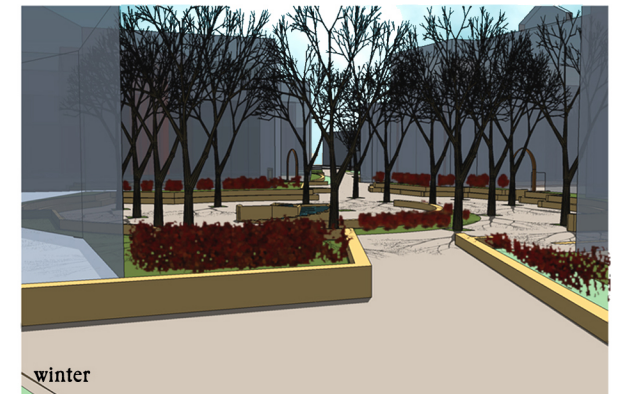
scarlet oak



red maple



spring/summer



winter

The site and context of Hyde Park and the of City of Chicago presented several challenges to the planting design. A sheer absence of topographic variation makes for a very flat landscape. Lack of positive drainage is often a problem and species choices are limited to an approved list published by the city planning office. While the courtyard design creates a microclimate that may be conducive to more delicate species, the unpredictable climate and extreme range of temperatures dictate what trees will flourish here.

JASON M. BRABBS, MLA

6 1 4 . 2 1 8 . 1 4 3 8
3 2 9 W I L B E R 2
C O L U M B U S O H I O 4 3 2 1 5
b r a b b s . 1 @ o s u . e d u